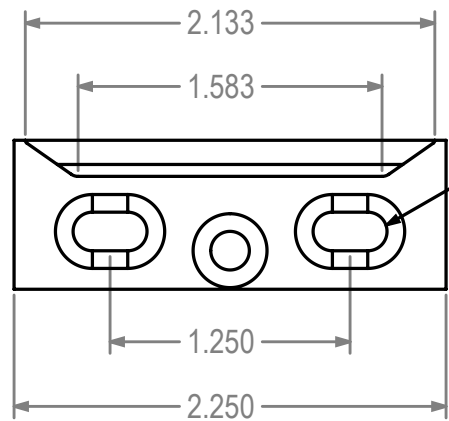
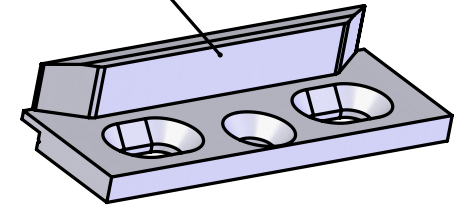


REVISIONS			
REV.#	DESCRIPTION	DATE	BY

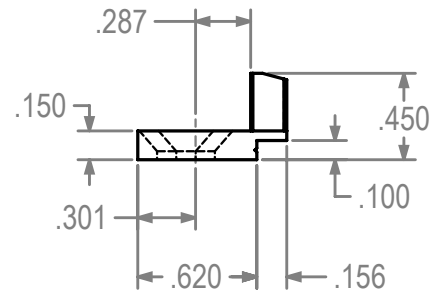


Mount Using  
#10 FH S/S Screws

Aluminum  
w/Black Coating



## 1553-001 Keeper for MPL Systems



Dimensions Are For Reference Purposes Only

Solutions That Set New Standards <b>CALDWELL</b> Since 1888				
Manufacturing Company 2605 Manitou Road, Rochester, New York				
TITLE		(ADV)		
1553-001 Keeper for MPL Systems				
THIRD ANGLE PROJECTION	DRAWN HV	DATE 9/11/14		
	CHECKED	DATE		
	APPROVED	DATE		
A	EX NO	DWG NO	REV	
SIZE		1553-001 twc	0	
SCALE 1:1		SHEET 1 OF 1		