

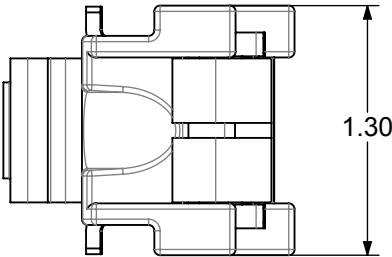
1

2

3

4

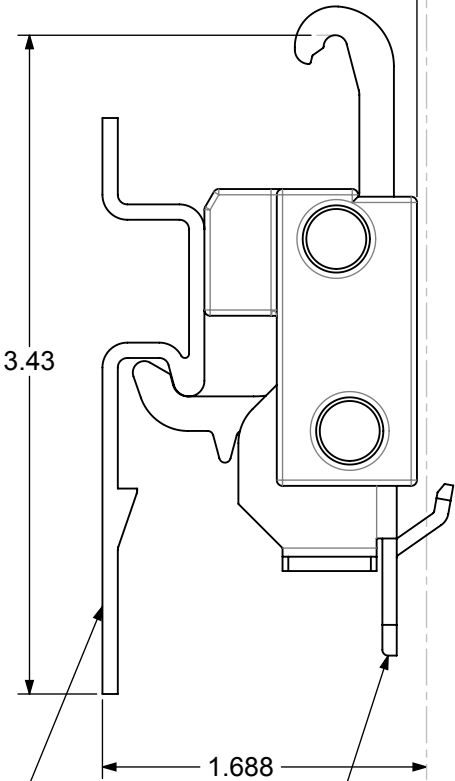
| REVISIONS | | | |
|-----------|-------------|------|----|
| REV.# | DESCRIPTION | DATE | BY |
| | | | |



1.30

BACK OF JAMB TYP

RECOMMENDED DESIGN CLEARANCE .050



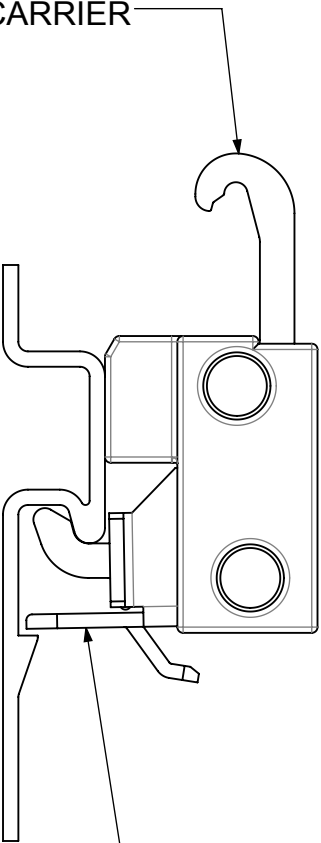
3.43

1.688

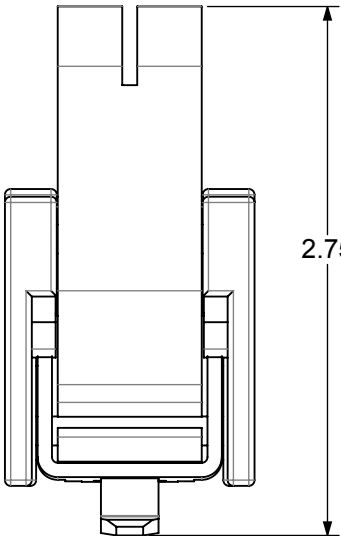
CALDWELL SASH
BRACKET PROFILE

TAKE OUT BRACKET IN
TAKE OUT POSITION




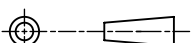
21B294 ECO CARRIER



TAKE OUT BRACKET IN
STORED POSITION



2.75

| | | | | |
|---|--|---|---|---|
| Solutions That Set New Standards CALDWELL Since 1888 | |  |  |  |
| Manufacturing Company 2605 Manitou Road, Rochester, New York | | | | |
| TITLE 21B294 CARRIER INSTALLATION | | | | |
| THIRD ANGLE PROJECTION  | | DRAWN JK DATE 11/4/11 | | |
| | | CHECKED DATE | | |
| | | APPROVED DATE | | |
| B EX NO | | DWG NO SL12-009 ECO | | REV 0 |
| SIZE | | SCALE 1:1 | | |
| | | SHEET 1 OF 1 | | |

THIS IS THE PROPERTY OF
CALDWELL MFG. CO.
ANY USE OR REPRODUCTION
WITHOUT AUTHORIZATION BY
THIS COMPANY IS PROHIBITED.