

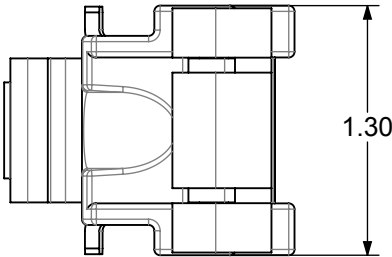
1

2

3

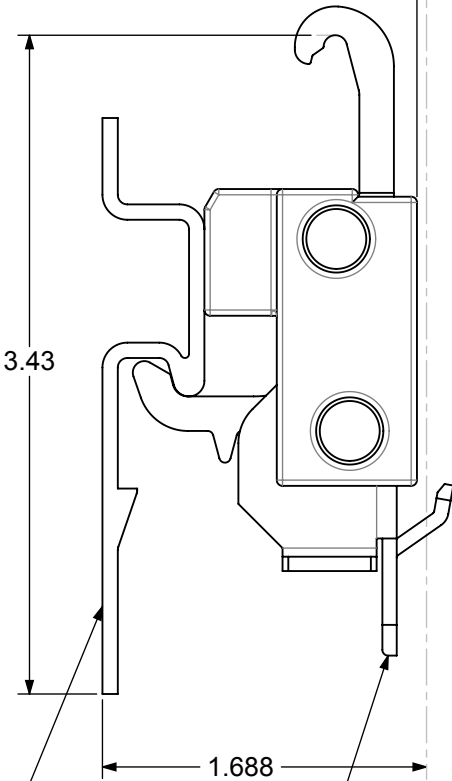
4

REVISIONS			
REV.#	DESCRIPTION	DATE	BY



BACK OF JAMB TYP

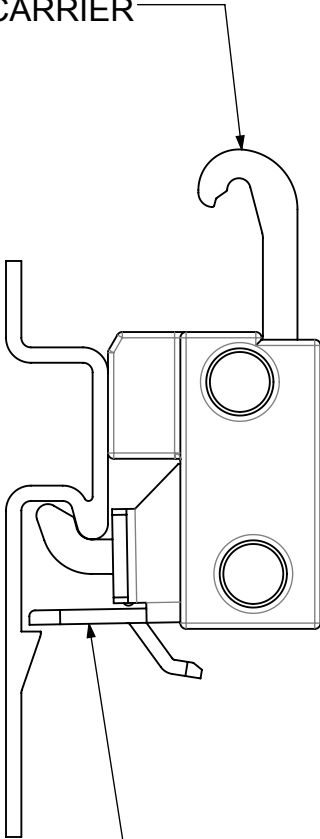
RECOMMENDED DESIGN CLEARANCE .050



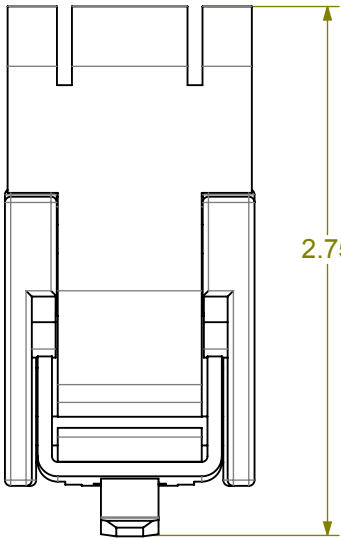
CALDWELL SASH
BRACKET PROFILE

TAKE OUT BRACKET IN
TAKE OUT POSITION

21B295 ECO CARRIER



TAKE OUT BRACKET IN
STORED POSITION



Solutions That Set New Standards

CALDWELL

Since 1888

Manufacturing Company 2605 Manitou Road, Rochester, New York

TITLE

21B295 CARRIER INSTALLATION

THIRD ANGLE PROJECTION

DRAWN

JK

DATE

11/4/11

CHECKED

DATE

APPROVED

DATE

B

EX NO

SIZE

SCALE

1:1

DWG NO

SL12-010 ECO

REV

0

SHEET

1 OF 1

THIS IS THE PROPERTY OF

CALDWELL MFG. CO.

ANY USE OR REPRODUCTION

WITHOUT AUTHORIZATION BY

THIS COMPANY IS PROHIBITED.

1

2

3

4