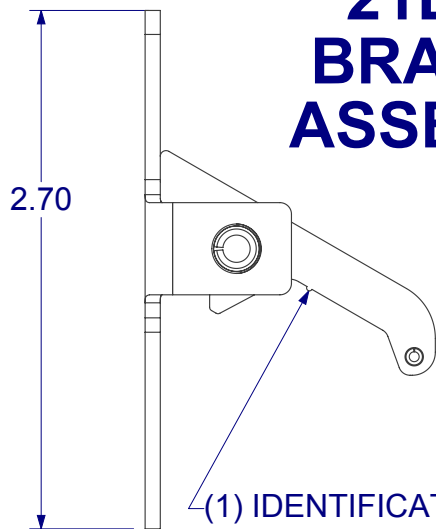
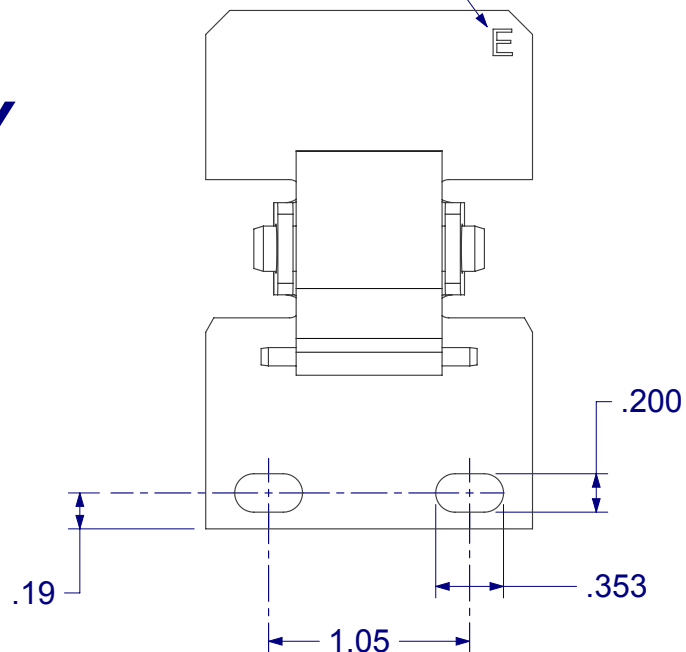


## 21B164 BRACKET ASSEMBLY



IDENTIFICATION  
NUMBER



THIS IS THE PROPERTY OF  
**CALDWELL MFG. CO.**  
ANY USE OR REPRODUCTION WITHOUT  
AUTHORIZATION BY THIS COMPANY IS PROHIBITED.

**NOTE: DO NOT SCALE DRAWING!**  
UNLESS OTHERWISE SPECIFIED  
ALL TOLERANCES ARE AS FOLLOWS:  
TWO DECIMAL PLACES  $\pm .013"$   
THREE DECIMAL PLACES  $\pm .008"$   
ANGULAR  $\pm 2^\circ$   
FRACTIONS  $\pm 1/64"$

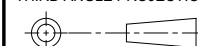
Solutions That Set New Standards  
**CALDWELL**  
Since 1888

Manufacturing Company 2605 Manitou Road, Rochester, New York

TITLE (TAKE-OUT III)

**SIDE LOAD BRACKET ASSEMBLY**

THIRD ANGLE PROJECTION



A EX NO  
SIZE

SCALE 1:1

DRAWN ASJ DATE 11/02/11

CHECKED DATE

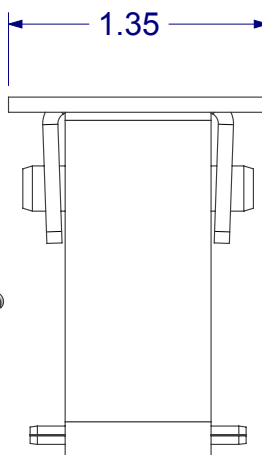
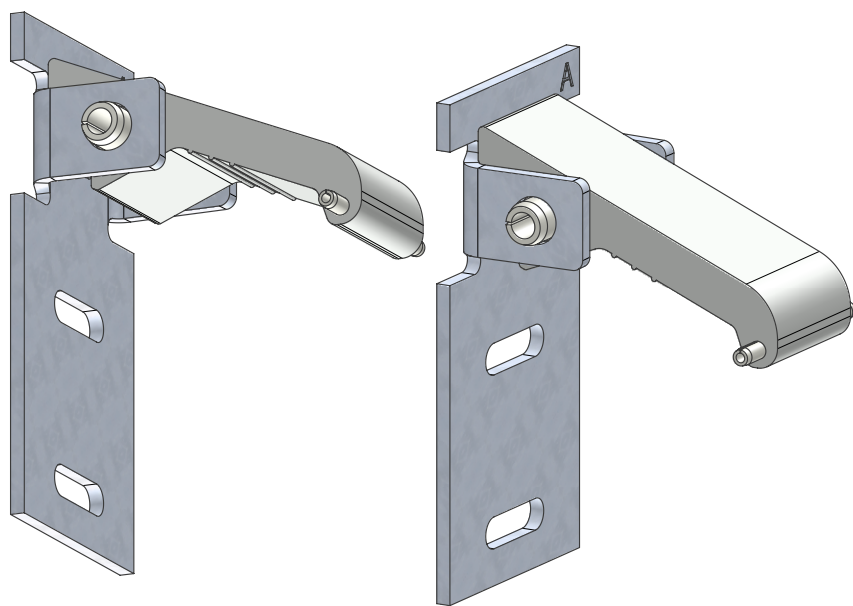
APPROVED RML DATE 11/04/11

DWG NO

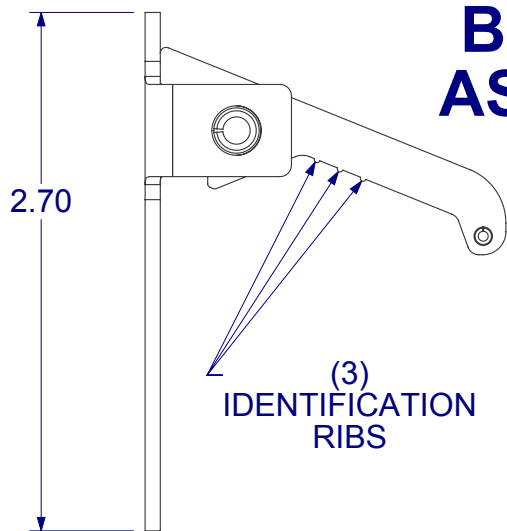
**co-21B164**

REV

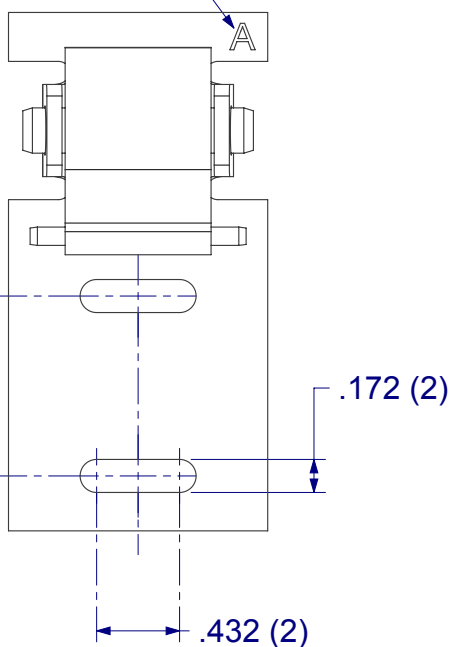
9



## 21B165 BRACKET ASSEMBLY



IDENTIFICATION  
NUMBER



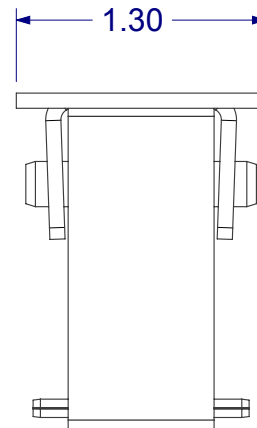
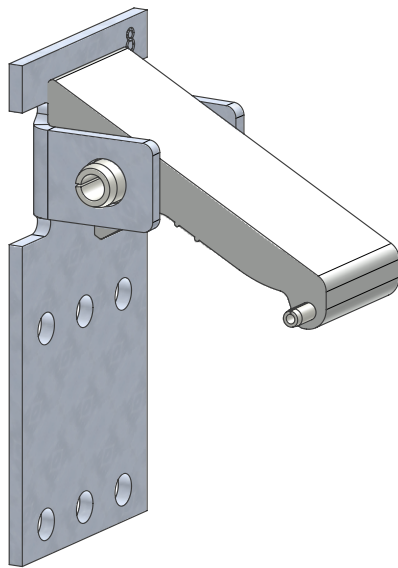
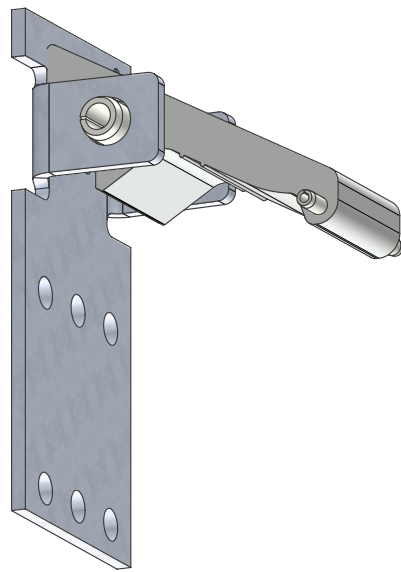
THIS IS THE PROPERTY OF  
**CALDWELL MFG. CO.**  
ANY USE OR REPRODUCTION WITHOUT  
AUTHORIZATION BY THIS COMPANY IS PROHIBITED.

**NOTE: DO NOT SCALE DRAWING!**  
UNLESS OTHERWISE SPECIFIED  
ALL TOLERANCES ARE AS FOLLOWS:  
TWO DECIMAL PLACES  $\pm .013"$   
THREE DECIMAL PLACES  $\pm .008"$   
ANGULAR  $\pm 2^\circ$   
FRACTIONS  $\pm 1/64"$

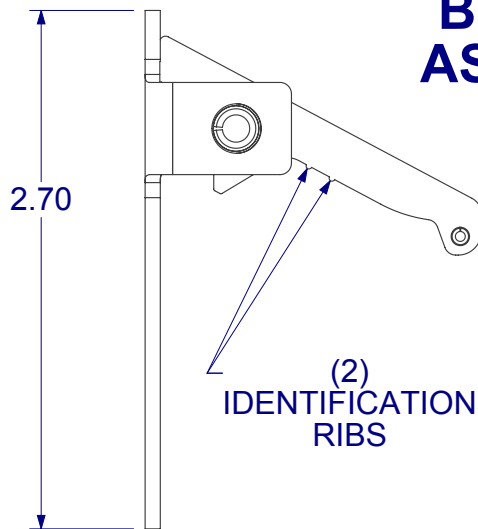
Solutions That Set New Standards  
**CALDWELL**  
Since 1888  
Manufacturing Company 2605 Manitou Road, Rochester, New York

TITLE  
**SIDE LOAD BRACKET ASSEMBLY**  
(TAKE-OUT III)

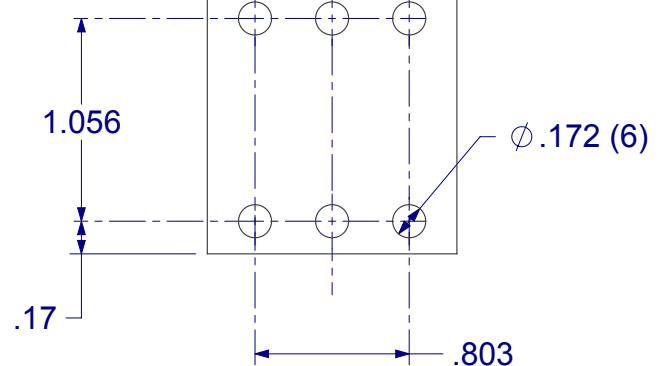
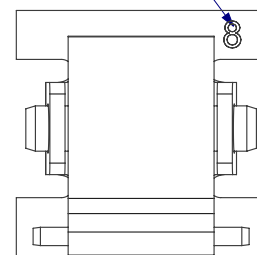
THIRD ANGLE PROJECTION	DRAWN ASJ	DATE 11/02/11
CHECKED	DATE	
APPROVED RML	DATE 11/04/11	
EX NO	DWG NO	REV
SIZE	<b>co-21B165</b>	9
SCALE 1:1		



# **21B166 BRACKET ASSEMBLY**



IDENTIFICATION  
NUMBER

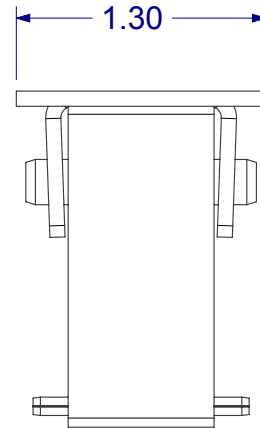
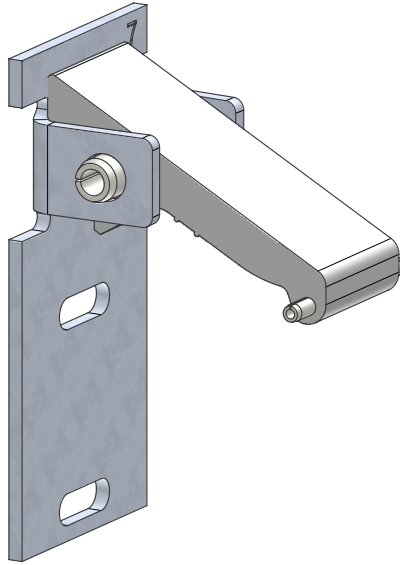
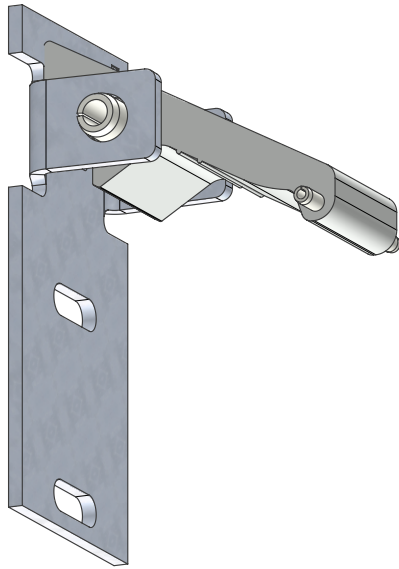


THIS IS THE PROPERTY OF  
**CALDWELL MFG. CO.**  
ANY USE OR REPRODUCTION WITHOUT  
AUTHORIZATION BY THIS COMPANY IS PROHIBITED.

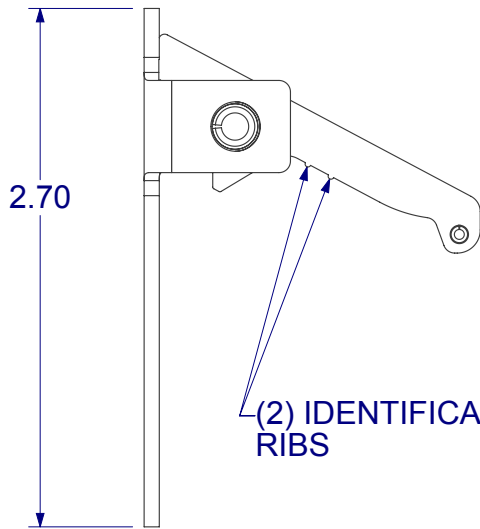
**NOTE: DO NOT SCALE DRAWING!**  
UNLESS OTHERWISE SPECIFIED  
ALL TOLERANCES ARE AS FOLLOWS:  
**TWO DECIMAL PLACES**  $\pm .013"$   
**THREE DECIMAL PLACES**  $\pm .008"$   
**ANGULAR**  $\pm 2^\circ$   
**FRACTIONS**  $\pm 1/64"$

Solutions That Set New Standards  
**CALDWELL**  
Since 1888  
Manufacturing Company 2605 Manitou Road, Rochester, New York

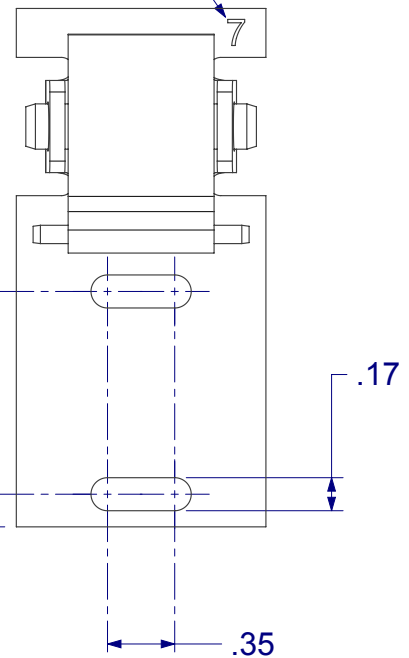
TITLE			
SIDE LOAD BRACKET ASSEMBLY (TAKE-OUT III)			
THIRD ANGLE PROJECTION	DRAWN ASJ	DATE 11/02/11	
	CHECKED	DATE	
	APPROVED RML	DATE 11/04/11	
A EX NO	DWG NO	<b>co-21B166</b>	
SIZE			REV 9
SCALE 1:1			



# 21B167 BRACKET ASSEMBLY



IDENTIFICATION  
NUMBER



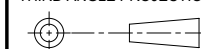
THIS IS THE PROPERTY OF  
**CALDWELL MFG. CO.**  
ANY USE OR REPRODUCTION WITHOUT  
AUTHORIZATION BY THIS COMPANY IS PROHIBITED.

**NOTE: DO NOT SCALE DRAWING!**  
UNLESS OTHERWISE SPECIFIED  
ALL TOLERANCES ARE AS FOLLOWS:  
TWO DECIMAL PLACES  $\pm .013"$   
THREE DECIMAL PLACES  $\pm .008"$   
ANGULAR  $\pm 2^\circ$   
FRACTIONS  $\pm 1/64"$

Solutions That Set New Standards  
**CALDWELL**  
Since 1888  
Manufacturing Company 2605 Manitou Road, Rochester, New York

TITLE  
**SIDE LOAD BRACKET ASSEMBLY**  
(TAKE-OUT III)

THIRD ANGLE PROJECTION



A EX NO  
SIZE

SCALE 1:1

DRAWN ASJ DATE 11/02/11

CHECKED DATE

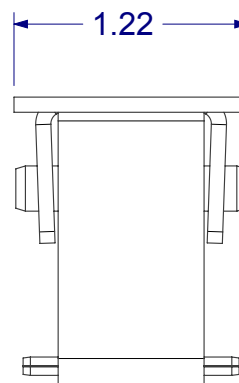
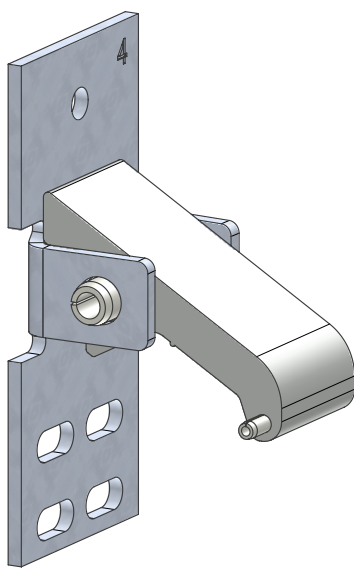
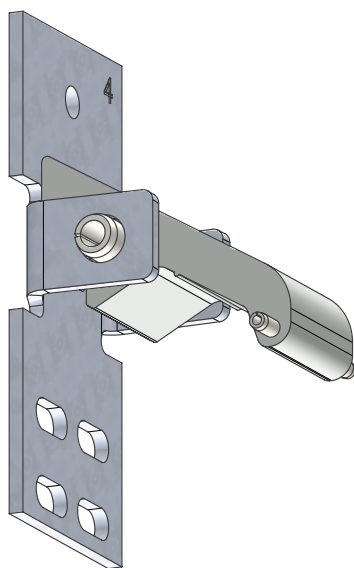
APPROVED RML DATE 11/02/11

DWG NO

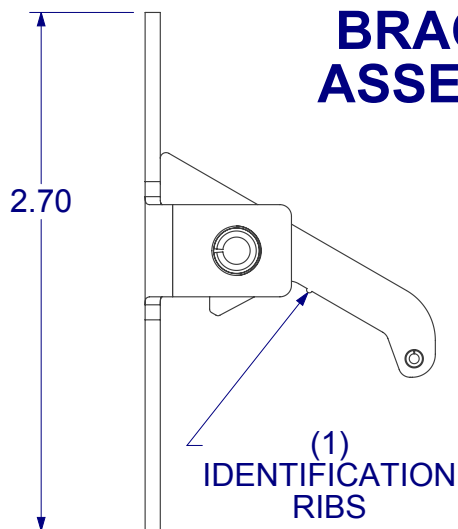
**co-21B167**

REV

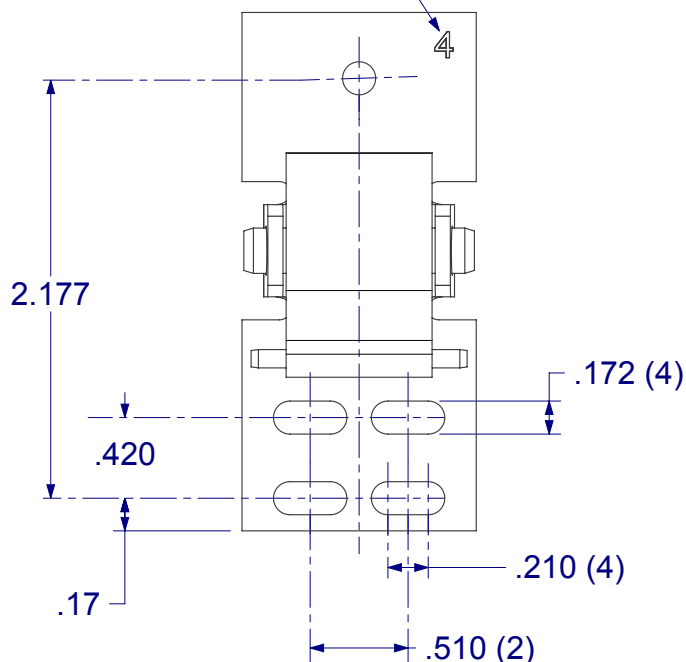
9



## 21B171 BRACKET ASSEMBLY




IDENTIFICATION  
NUMBER

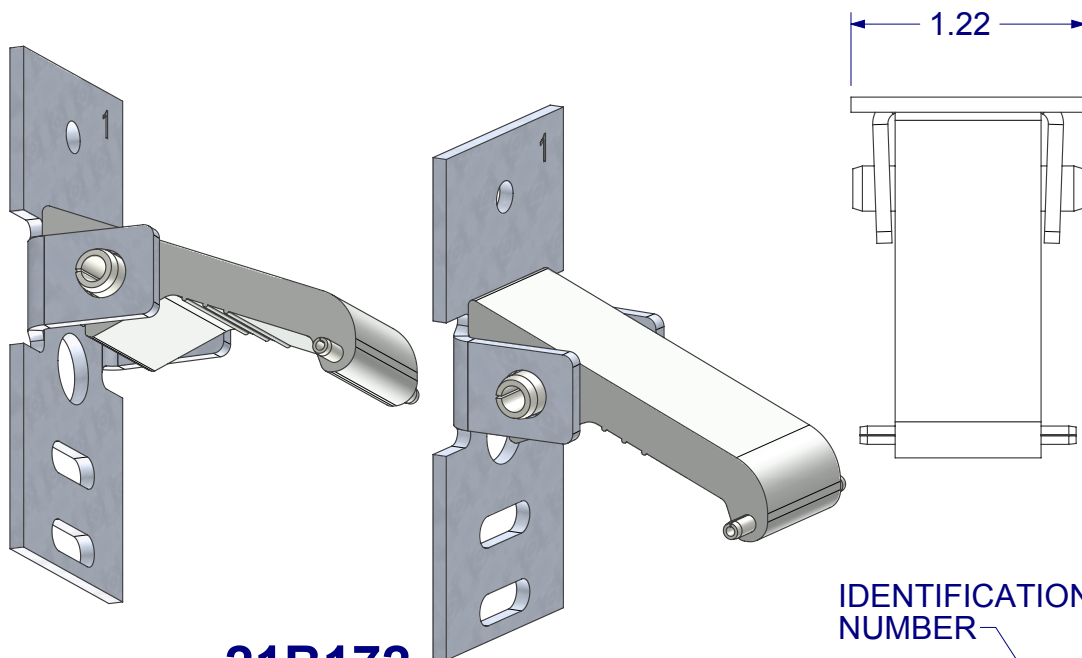


THIS IS THE PROPERTY OF  
**CALDWELL MFG. CO.**  
ANY USE OR REPRODUCTION WITHOUT  
AUTHORIZATION BY THIS COMPANY IS PROHIBITED.

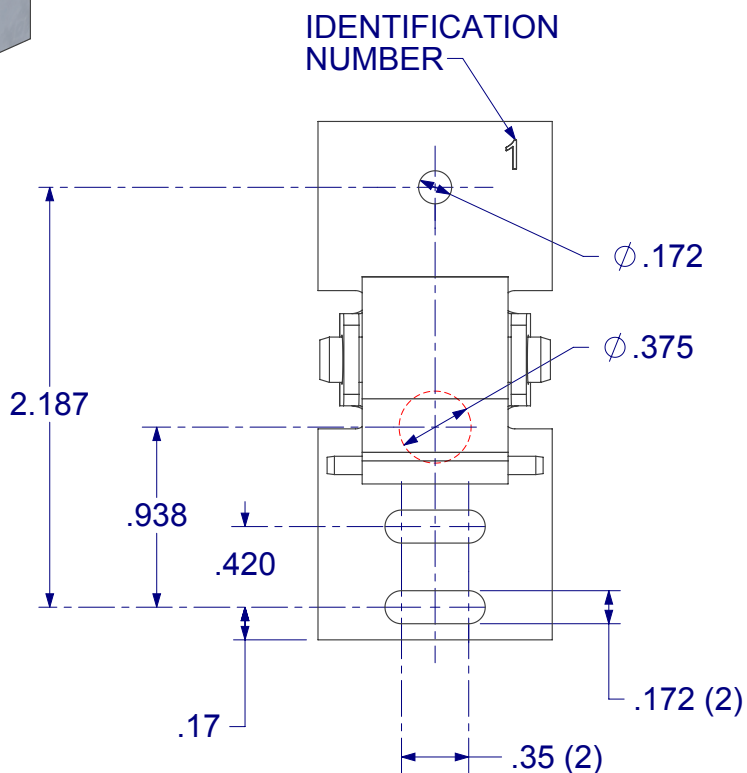
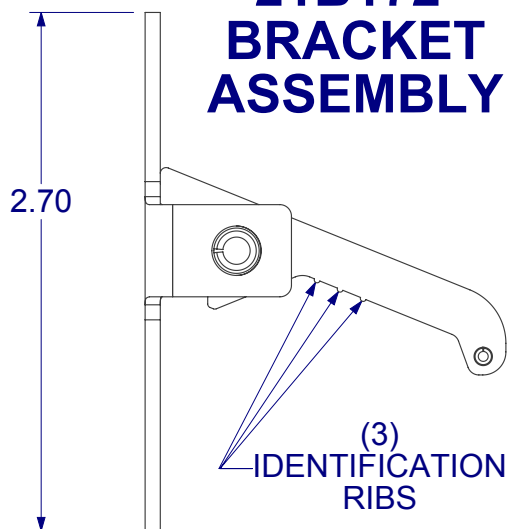
**NOTE: DO NOT SCALE DRAWING!**  
UNLESS OTHERWISE SPECIFIED  
ALL TOLERANCES ARE AS FOLLOWS:  
TWO DECIMAL PLACES  $\pm .013"$   
THREE DECIMAL PLACES  $\pm .008"$   
ANGULAR  $\pm 2^\circ$   
FRACTIONS  $\pm 1/64"$

Solutions That Set New Standards  
**CALDWELL**  
Since 1888  
Manufacturing Company 2605 Manitou Road, Rochester, New York

SIDE LOAD BRACKET ASSEMBLY		(TAKE-OUT III)	
THIRD ANGLE PROJECTION		DRAWN ASJ	DATE 11/02/11
		CHECKED	DATE
A EX NO		APPROVED RML	DATE 11/04/11
SIZE		DWG NO	REV
SCALE 1:1		co-21B171	
		9	



## 21B172 BRACKET ASSEMBLY



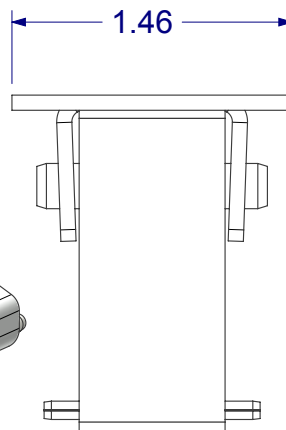
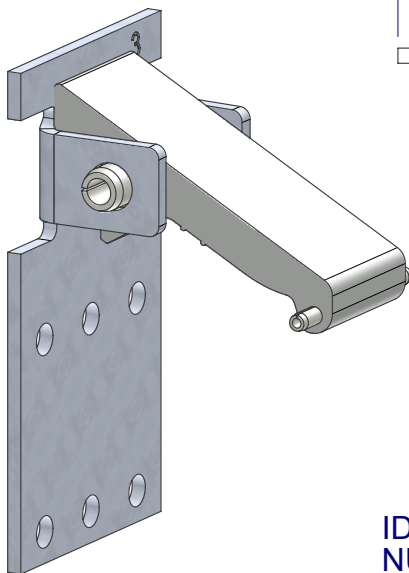
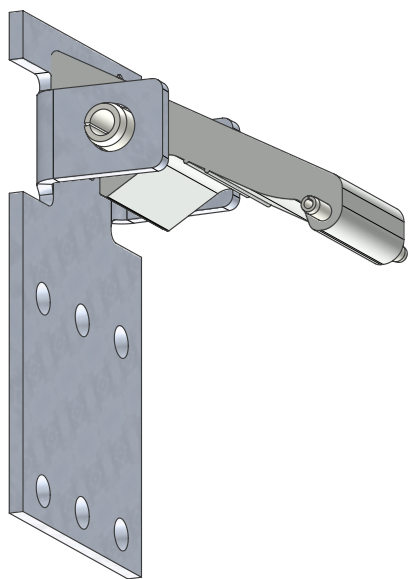
THIS IS THE PROPERTY OF  
**CALDWELL MFG. CO.**  
ANY USE OR REPRODUCTION WITHOUT  
AUTHORIZATION BY THIS COMPANY IS PROHIBITED.

**NOTE: DO NOT SCALE DRAWING!**  
UNLESS OTHERWISE SPECIFIED  
ALL TOLERANCES ARE AS FOLLOWS:  
TWO DECIMAL PLACES  $\pm .013"$   
THREE DECIMAL PLACES  $\pm .008"$   
ANGULAR  $\pm 2^\circ$   
FRACTIONS  $\pm 1/64"$

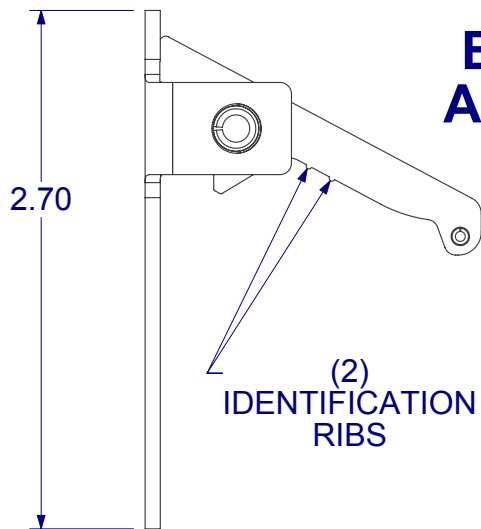
Solutions That Set New Standards  
**CALDWELL**  
Since 1888  
Manufacturing Company 2605 Manitou Road, Rochester, New York

TITLE SIDE LOAD BRACKET ASSEMBLY (TAKE-OUT III)

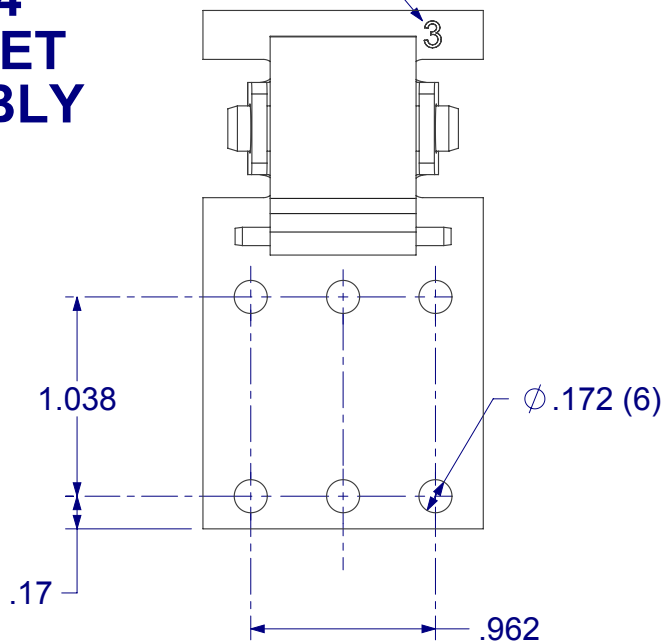
THIRD ANGLE PROJECTION	DRAWN ASJ	DATE 11/02/11
A	CHECKED	DATE
	APPROVED RML	DATE 11/04/11
EX NO	DWG NO	REV
SIZE	<b>co-21B172</b>	9
SCALE 1:1		



## 21B174 BRACKET ASSEMBLY



IDENTIFICATION  
NUMBER



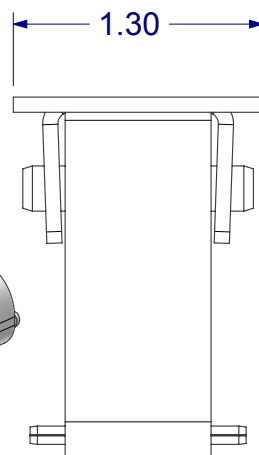
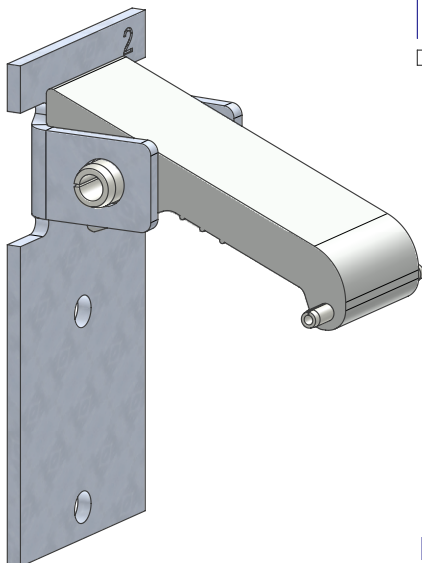
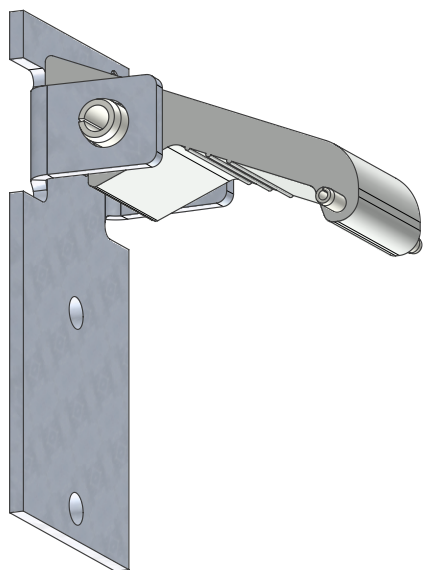
THIS IS THE PROPERTY OF  
**CALDWELL MFG. CO.**  
ANY USE OR REPRODUCTION WITHOUT  
AUTHORIZATION BY THIS COMPANY IS PROHIBITED.

**NOTE: DO NOT SCALE DRAWING!**  
UNLESS OTHERWISE SPECIFIED  
ALL TOLERANCES ARE AS FOLLOWS:  
TWO DECIMAL PLACES  $\pm .013"$   
THREE DECIMAL PLACES  $\pm .008"$   
ANGULAR  $\pm 2^\circ$   
FRACTIONS  $\pm 1/64"$

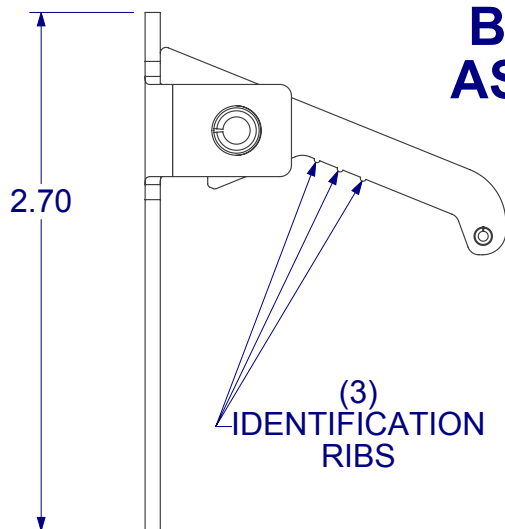
Solutions That Set New Standards  
**CALDWELL**  
Since 1888  
Manufacturing Company 2605 Manitou Road, Rochester, New York

TITLE  
**SIDE LOAD BRACKET ASSEMBLY**  
(TAKE-OUT III)

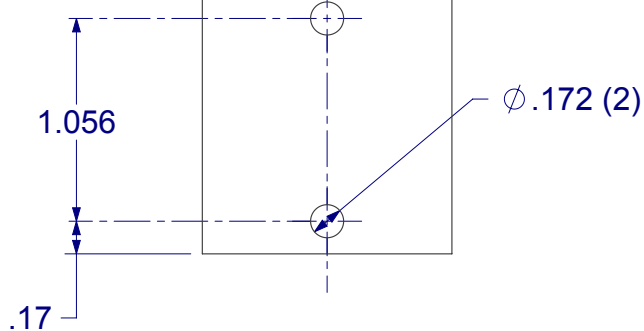
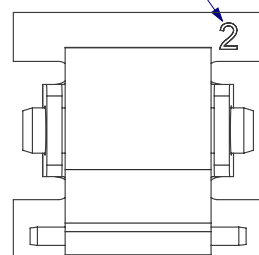
THIRD ANGLE PROJECTION	DRAWN ASJ	DATE 11/02/11
CHECKED	DATE	
APPROVED RML	DATE 11/04/11	
EX NO	DWG NO	REV
SIZE	<b>co-21B174</b>	9
SCALE 1:1		



## 21B175 BRACKET ASSEMBLY



IDENTIFICATION  
NUMBER



THIS IS THE PROPERTY OF  
**CALDWELL MFG. CO.**  
ANY USE OR REPRODUCTION WITHOUT  
AUTHORIZATION BY THIS COMPANY IS PROHIBITED.

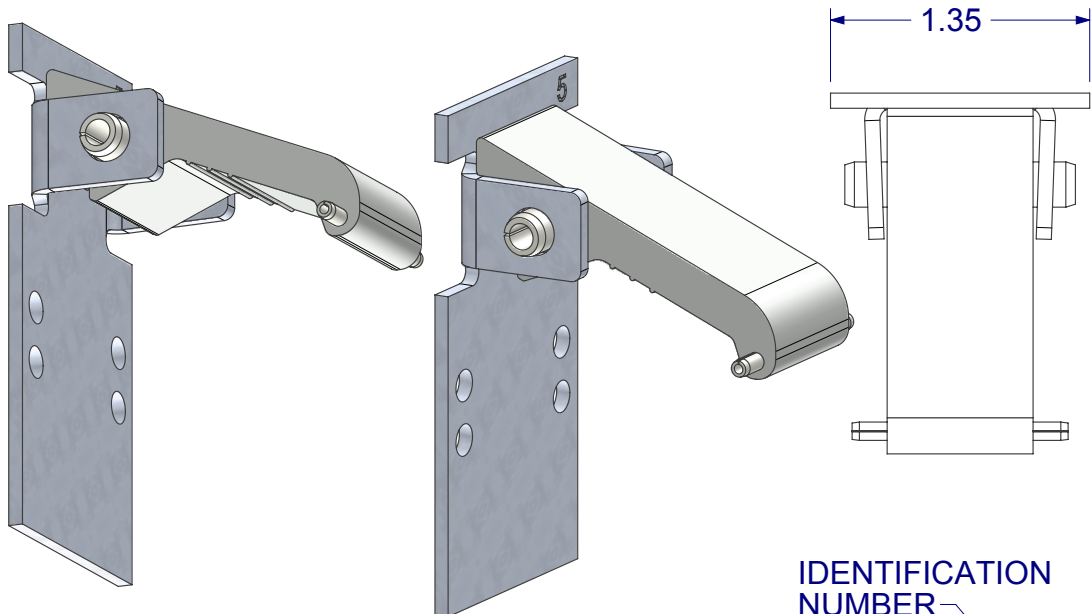
**NOTE: DO NOT SCALE DRAWING!**  
UNLESS OTHERWISE SPECIFIED  
ALL TOLERANCES ARE AS FOLLOWS:  
TWO DECIMAL PLACES  $\pm .013"$   
THREE DECIMAL PLACES  $\pm .008"$   
ANGULAR  $\pm 2^\circ$   
FRACTIONS  $\pm 1/64"$

Solutions That Set New Standards  
**CALDWELL**  
Since 1888  
Manufacturing Company 2605 Manitou Road, Rochester, New York

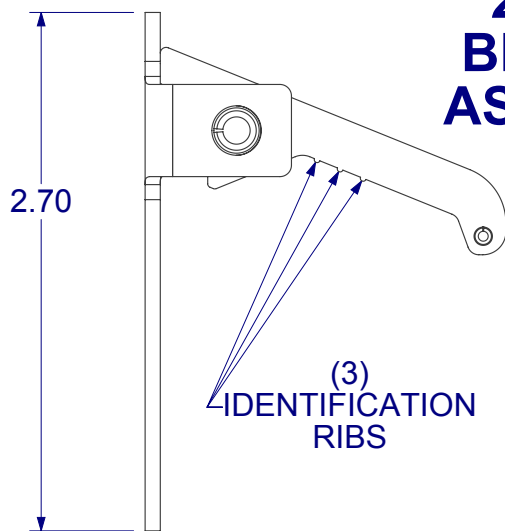
TITLE  
SIDE LOAD BRACKET ASSEMBLY (TAKE-OUT III)

THIRD ANGLE PROJECTION	DRAWN ASJ	DATE 11/02/11
A	CHECKED	DATE
	APPROVED RML	DATE 11/02/11
EX NO	DWG NO	REV
SIZE	<b>co-21B175</b>	9
SCALE 1:1		

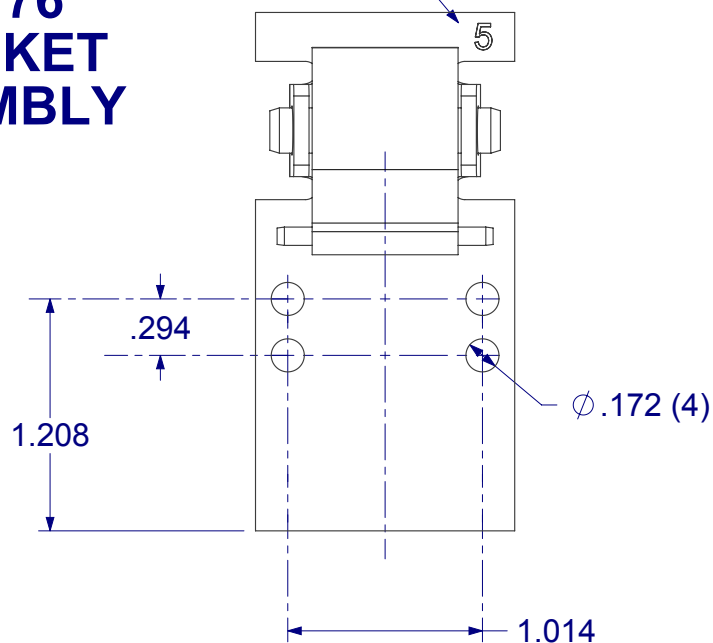




## 21B176 BRACKET ASSEMBLY



IDENTIFICATION  
NUMBER

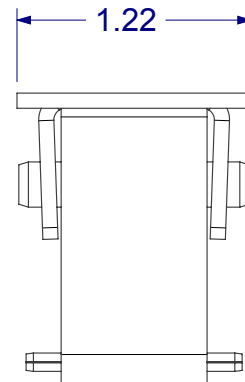
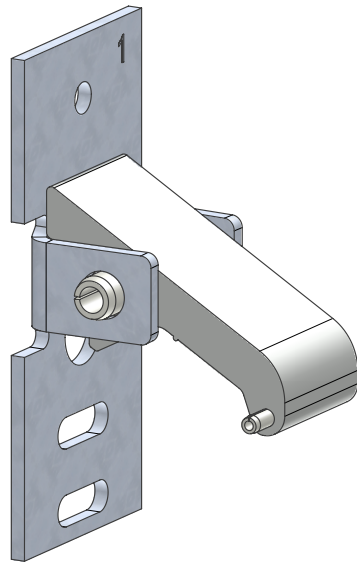
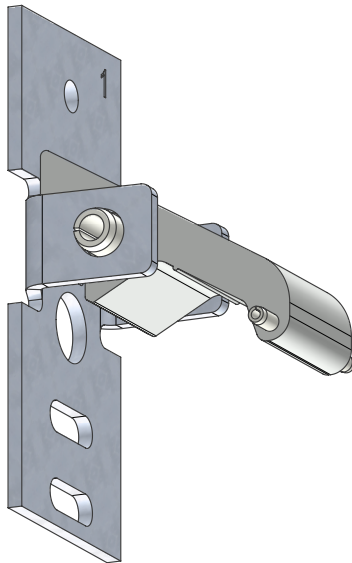


THIS IS THE PROPERTY OF  
**CALDWELL MFG. CO.**  
ANY USE OR REPRODUCTION WITHOUT  
AUTHORIZATION BY THIS COMPANY IS PROHIBITED.

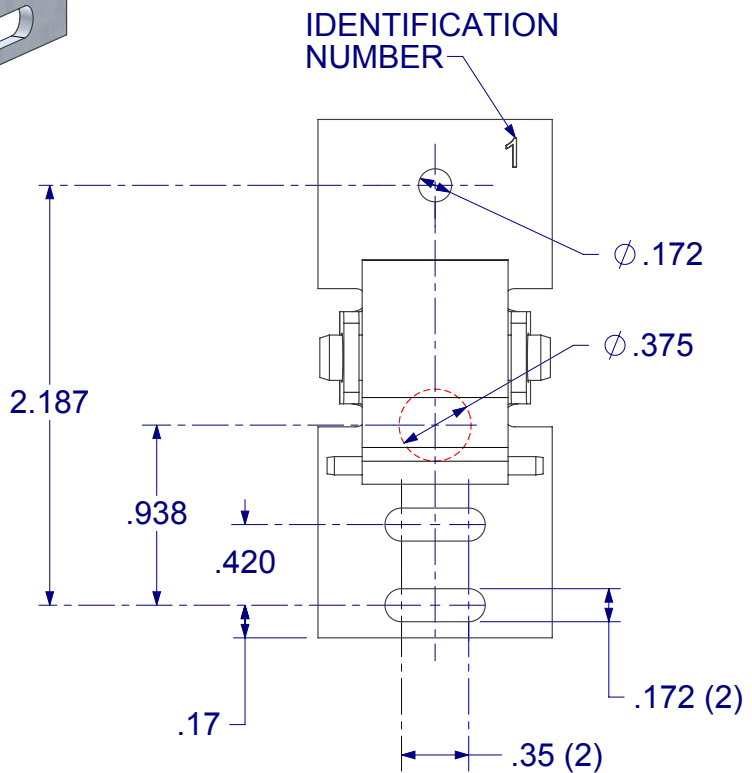
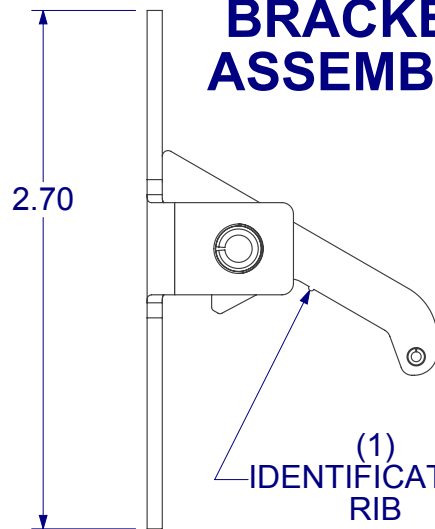
**NOTE: DO NOT SCALE DRAWING!**  
UNLESS OTHERWISE SPECIFIED  
ALL TOLERANCES ARE AS FOLLOWS:  
TWO DECIMAL PLACES  $\pm .013"$   
THREE DECIMAL PLACES  $\pm .008"$   
ANGULAR  $\pm 2^\circ$   
FRACTIONS  $\pm 1/64"$

Solutions That Set New Standards  
**CALDWELL**  
Since 1888  
Manufacturing Company 2605 Manitou Road, Rochester, New York

TITLE  
**SIDE LOAD BRACKET ASSEMBLY**  
(TAKE-OUT III)  
THIRD ANGLE PROJECTION  
DRAWN ASJ DATE 11/02/11  
CHECKED DATE  
APPROVED RML DATE 11/04/11  
DWG NO  
**co-21B176**  
REV  
9  
SCALE 1:1



## 21B177 BRACKET ASSEMBLY



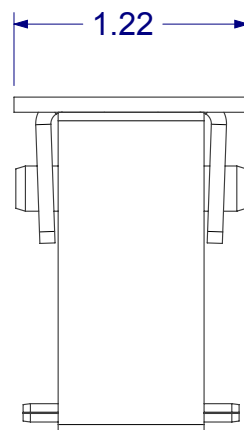
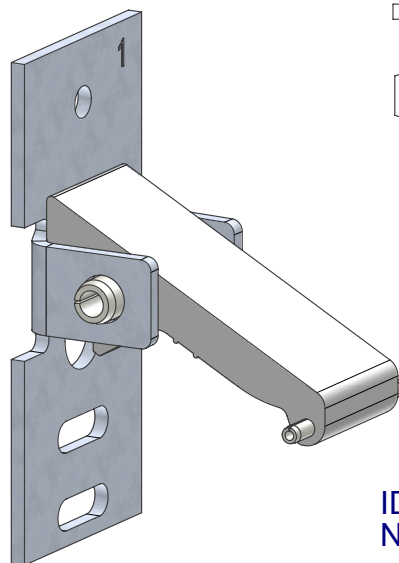
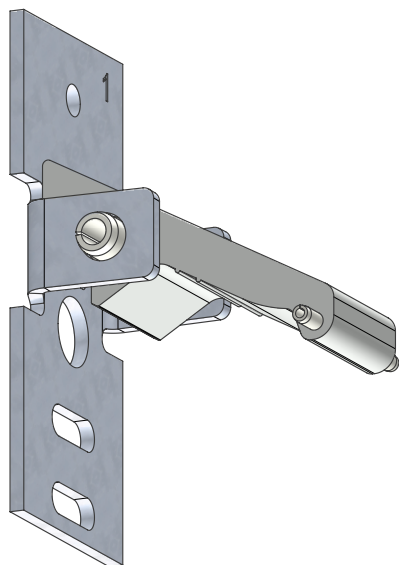
THIS IS THE PROPERTY OF  
**CALDWELL MFG. CO.**  
ANY USE OR REPRODUCTION WITHOUT  
AUTHORIZATION BY THIS COMPANY IS PROHIBITED.

**NOTE: DO NOT SCALE DRAWING!**  
UNLESS OTHERWISE SPECIFIED  
ALL TOLERANCES ARE AS FOLLOWS:  
TWO DECIMAL PLACES  $\pm .013"$   
THREE DECIMAL PLACES  $\pm .008"$   
ANGULAR  $\pm 2^\circ$   
FRACTIONS  $\pm 1/64"$

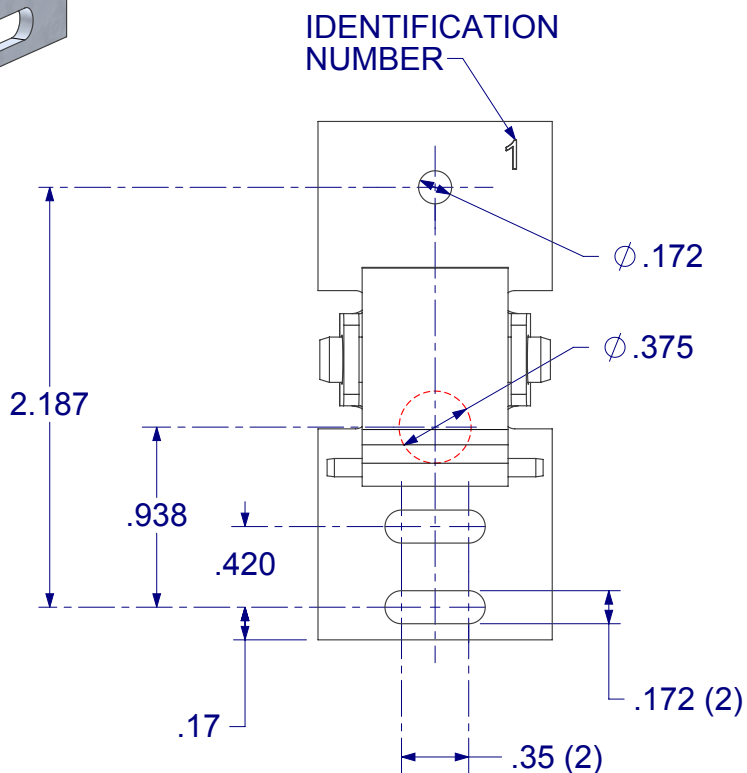
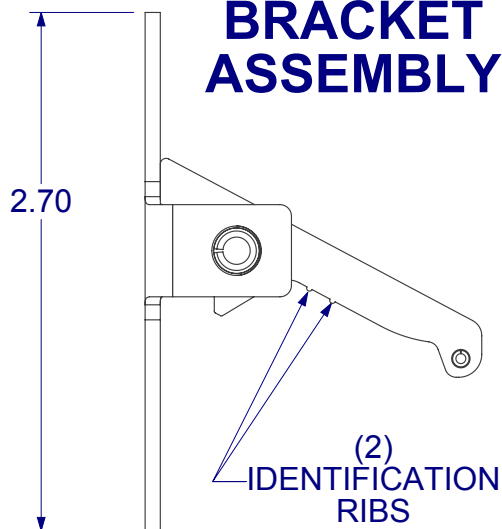
Solutions That Set New Standards  
**CALDWELL**  
Since 1888  
Manufacturing Company 2605 Manitou Road, Rochester, New York

TITLE  
**SIDE LOAD BRACKET ASSEMBLY**  
(TAKE-OUT III)

THIRD ANGLE PROJECTION	DRAWN ASJ	DATE 11/02/11
	CHECKED	DATE
	APPROVED RML	DATE 11/04/11
A EX NO	DWG NO	REV
SIZE	<b>co-21B177</b>	9
SCALE 1:1		



## 21B178 BRACKET ASSEMBLY

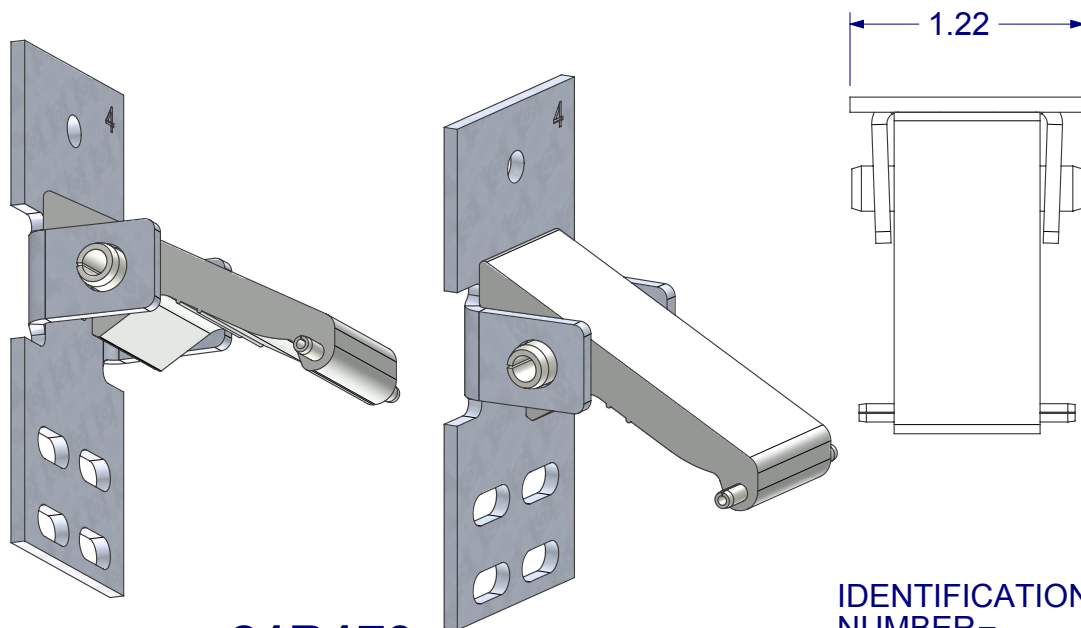


THIS IS THE PROPERTY OF  
**CALDWELL MFG. CO.**  
ANY USE OR REPRODUCTION WITHOUT  
AUTHORIZATION BY THIS COMPANY IS PROHIBITED.

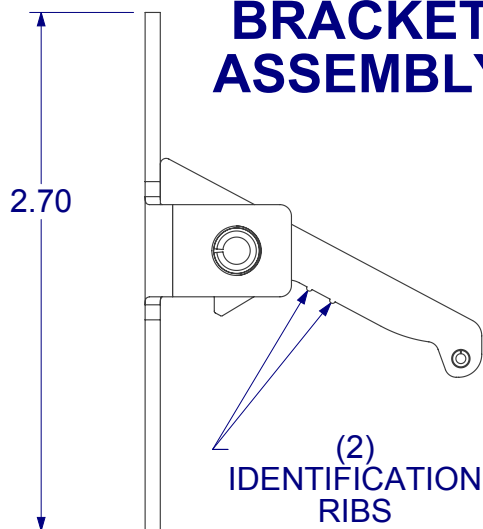
**NOTE: DO NOT SCALE DRAWING!**  
UNLESS OTHERWISE SPECIFIED  
ALL TOLERANCES ARE AS FOLLOWS:  
TWO DECIMAL PLACES  $\pm .013"$   
THREE DECIMAL PLACES  $\pm .008"$   
ANGULAR  $\pm 2^\circ$   
FRACTIONS  $\pm 1/64"$

Solutions That Set New Standards  
**CALDWELL**  
Since 1888  
Manufacturing Company 2605 Manitou Road, Rochester, New York

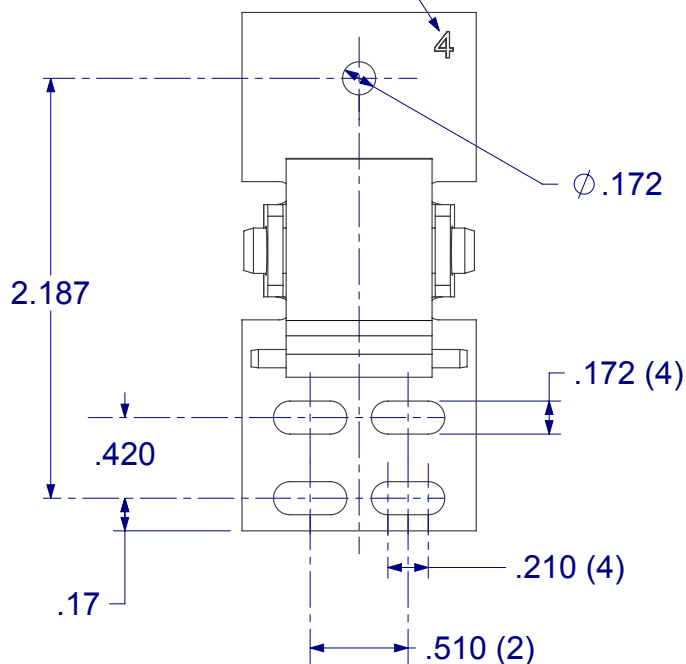
TITLE  
**SIDE LOAD BRACKET ASSEMBLY**  
(TAKE-OUT III)  
THIRD ANGLE PROJECTION  
DRAWN ASJ DATE 11/02/11  
CHECKED DATE  
APPROVED RML DATE 11/04/11  
DWG NO  
**co-21B178**  
REV  
9  
SCALE 1:1



## 21B179 BRACKET ASSEMBLY



IDENTIFICATION  
NUMBER



THIS IS THE PROPERTY OF  
**CALDWELL MFG. CO.**  
ANY USE OR REPRODUCTION WITHOUT  
AUTHORIZATION BY THIS COMPANY IS PROHIBITED.

**NOTE: DO NOT SCALE DRAWING!**  
UNLESS OTHERWISE SPECIFIED  
ALL TOLERANCES ARE AS FOLLOWS:  
TWO DECIMAL PLACES  $\pm .013"$   
THREE DECIMAL PLACES  $\pm .008"$   
ANGULAR  $\pm 2^\circ$   
FRACTIONS  $\pm 1/64"$

Solutions That Set New Standards  
**CALDWELL**  
Since 1888  
Manufacturing Company 2605 Manitou Road, Rochester, New York

TITLE  
**SIDE LOAD BRACKET ASSEMBLY**  
(TAKE-OUT III)

THIRD ANGLE PROJECTION	DRAWN ASJ	DATE 11/02/11
CHECKED	DATE	
APPROVED RML	DATE 11/04/11	
EX NO	DWG NO	REV
SIZE	<b>co-21B179</b>	9
SCALE 1:1		