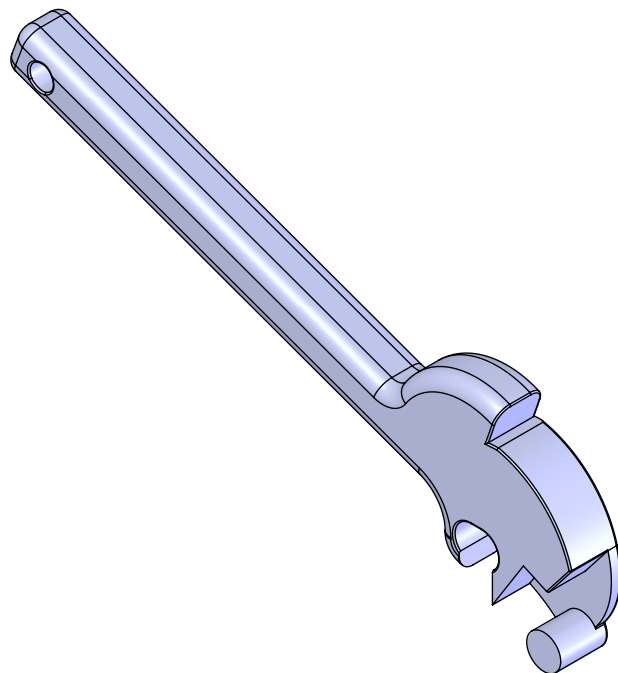
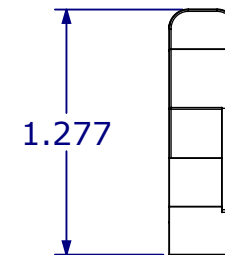
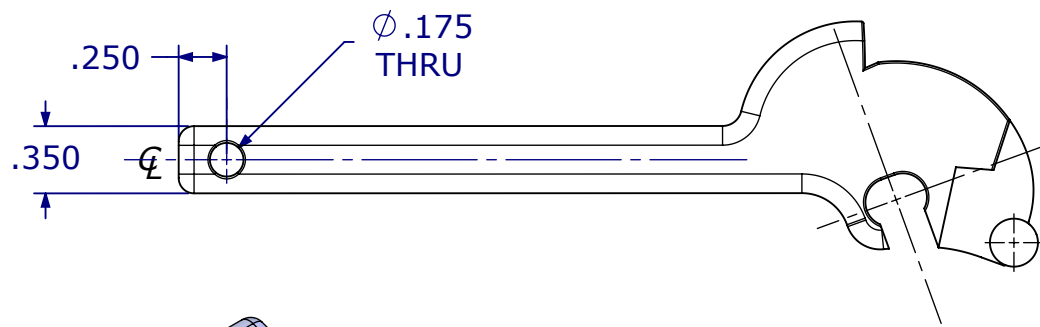
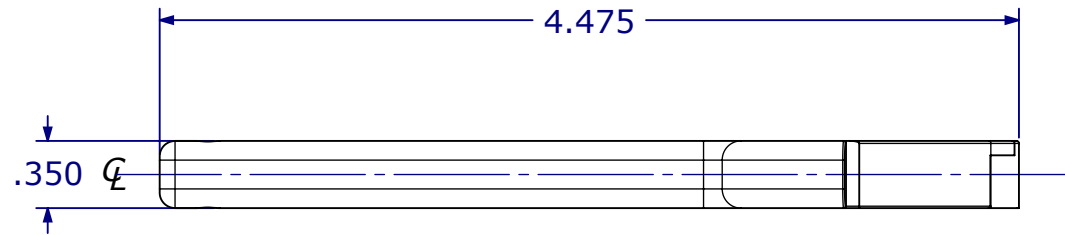






| REVISIONS |             |      |    |
|-----------|-------------|------|----|
| REV.#     | DESCRIPTION | DATE | BY |
|           |             |      |    |



Use to Operate 42C0005 and 42C0006 Housings  
Material: Zinc Die Cast, Natural (no finish applied)

|   |  |   |   |   |
|---|--|---|---|---|
| Solutions That Set New Standards<br><b>CALDWELL</b><br>Since 1888   |  |  |  |  |
| Manufacturing Company 2605 Manitou Road, Rochester, New York  |  |   |   |   |
| TITLE<br><b>42C0004 Custodial Handle</b>  |  |   |   |   |
| THIRD ANGLE PROJECTION<br> |  | DRAWN <b>ASJ</b> DATE <b>03/24/16</b>   |   | REV<br><b>1</b>   |
| CHECKED   |  | DATE  |   |   |
| APPROVED  |  | DATE  |   |   |
| A EX NO<br>SIZE <b>AEX-1327</b>   |  | DWG NO<br><b>co-42C0004</b>   |   |   |
| SCALE <b>1:1</b>  |  | SHEET <b>1 OF 1</b>   |   |   |